



The Current status and experiences gained with the Identification and Documentation of LMOs in Thailand

Pantaree Kanjanawattanawong (MSc. Plant Diversity)
Secretary assistant
The Biosafety Assessment Sub-committee
Department of Agriculture
Thailand



Outline

- Introduction
- GM plant import: Authorities
- GM plant import: Process and required documents for Research purposes
- After Imported
- Difficulties & Challenges
- Plans to Solve the problems
- Specific capacity building



Introduction: Over all

- ◉ Commercial GM plants and animals growing is still prohibited.
- ◉ GMOs import must be approved by governmental authorities
- ◉ Field Trials must be approved by the cabinet
- ◉ Biosafety law is in progress
- ◉ Institutional Biosafety Committee (IBC) has been set up in most governmental departments relating to GMOs

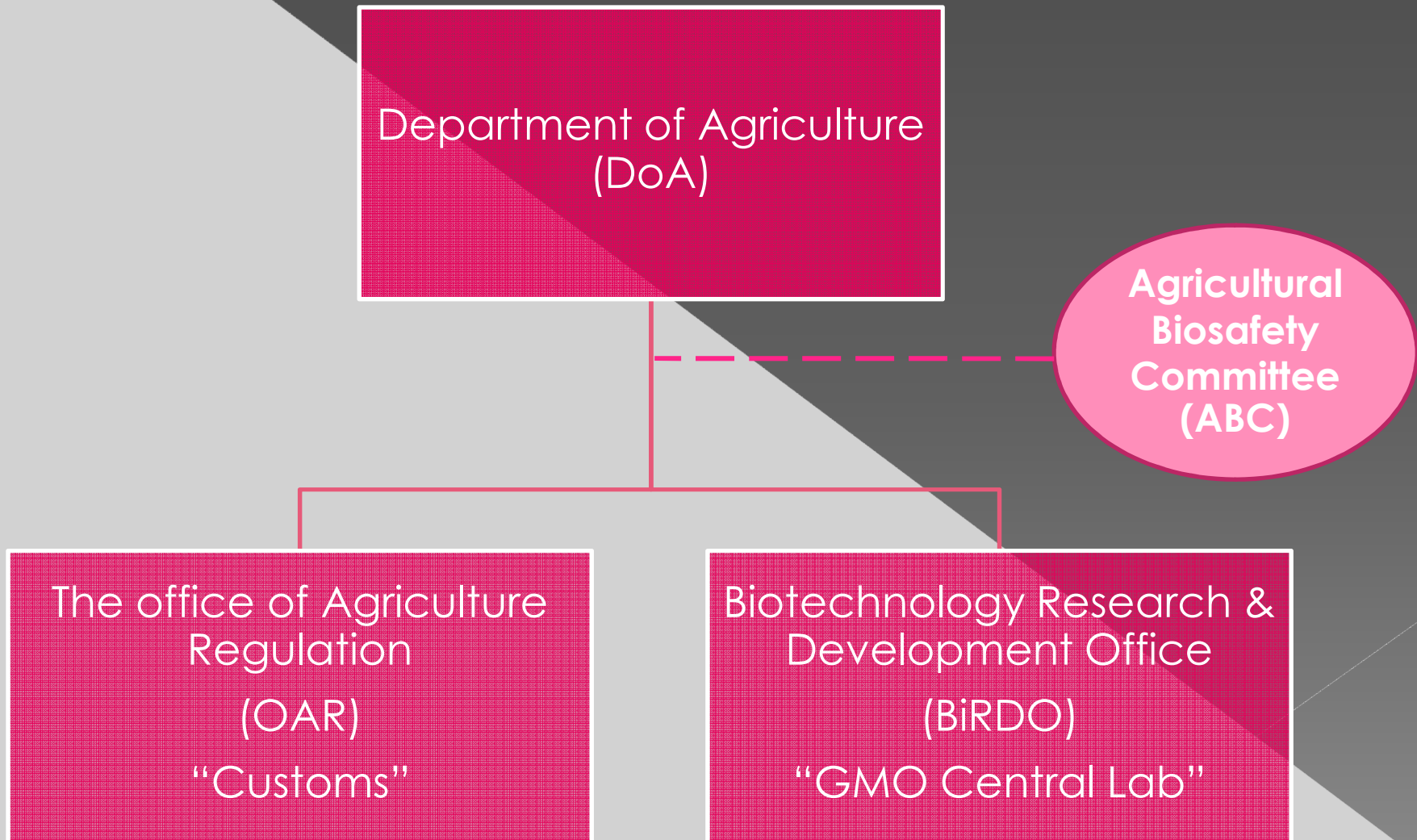


Introduction: Authorities

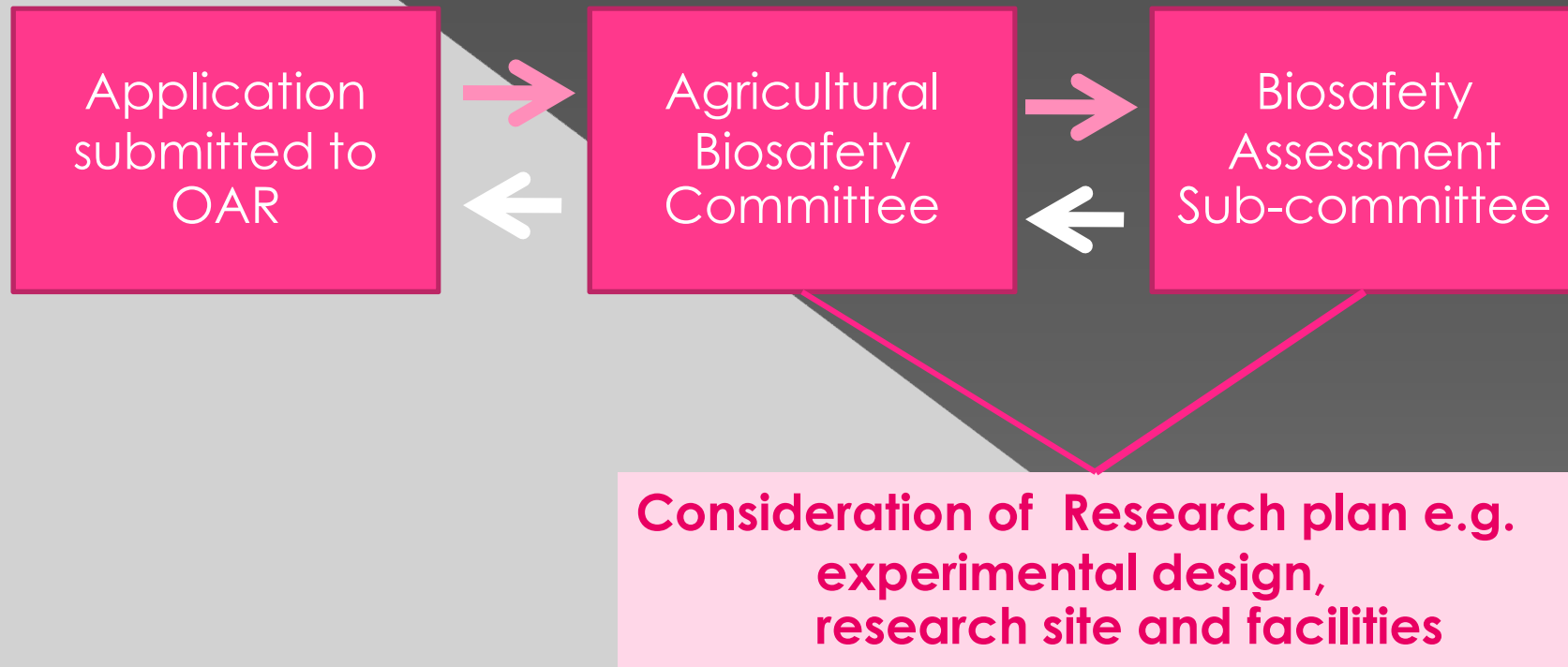
- ◉ GM microbes – Department of Medical Sciences
- ◉ GM Plants – Department of Agriculture
- ◉ GM Livestock, GMOs for use as feed – Department of Livestock Development
- ◉ GM Aquatic animal – Department of Fisheries
- ◉ Food – Food & Drug Administrative



GM plant import: Authorities



GM plant import: Process for Research purposes





GM plant import: required documents

- ◉ Application Form (P.Q.1)
- ◉ Information of LM plant
 - > Host, donor, vector, purposes of gene transfer, method of gene construction, history of safe use, references, etc.
- ◉ Research proposal
 - > Including experimental design, lab/greenhouse plan, facilities, waste management plan
- ◉ Research/Contact persons



GM plant import: documents

- Approved
 - Import Permission (P.Q. 2)
 - Import Permission label (P.Q. 3) to be attached to the package

<p>แบบ พ.ก. ๓ Form P.Q. 3</p> <p>ใบอนุญาตนำเข้าสิ่งต้องห้าม Permit No.</p>	<p>หีบห่อหีบบรรจุสิ่งต้องห้าม ตามพระราชบัญญัติกักพืช พ.ศ. ๒๕๐๗ This package contains prohibited materials Under Plant Quarantine Law B.E. 2507</p> <p>ส่ง DELIVER TO อธิบดีกรมวิชาการเกษตร Director General DEPARTMENT OF AGRICULTURE กรุงเทพฯ ประเทศไทย BANGKOK THAILAND</p>	<p>DIRECTIONS FOR MAILING MATERIALS UNDER PERMIT TO THAILAND</p> <p>Ship under green and yellow tag only materials covered by permit of which it bears the number. Other materials may be confiscated.</p> <p>Place within the package consignee's name and address, invoice, and phytosanitary certificate issued by competent officials of your country or its equivalent.</p> <p>Attach securely to face of each package a green and yellow tag bearing number of permit under which material is being shipped.</p> <p>Do not write on this tag.</p> <p>Do not place any delivery address on package. The permit number on tag will insure proper delivery.</p> <p>Place on the outside of package your own address, statement of contents.</p> <p>Ship the materials insured or registered and prepaid.</p>
--	--	---



After imported

- Samples will be taken by OAR and sent to GMOs Central Lab
- GMOs Central Lab analyses:
 - > Raw and processed food
 - > Qualitative and quantitative detection by PCR and Real-time PCR
 - > Crop: Soybean, Maize, Rice, Papaya and other crops
- Various methods



Difficulties & Challenges

- Forms/ Guidelines :
Repeated information request
- Same forms : different users : different way
of filling



Plans to Solve the problems

- Forms and guidelines revision is starting
- When finished, a meeting with target users will be set up.



Specific capacity building

- Import permission depends on the result of biosafety assessment of research/experiment plan
- Well-trained biosafety Assessors are most required



Acknowledgement

- ◉ Dr. Piyarat Thammakijawat
GMOs Central Lab, BiRDO, DoA
- ◉ BCH of the Office of Natural Resources and
Environment Policy and Planning



◎ Thank you for your attention